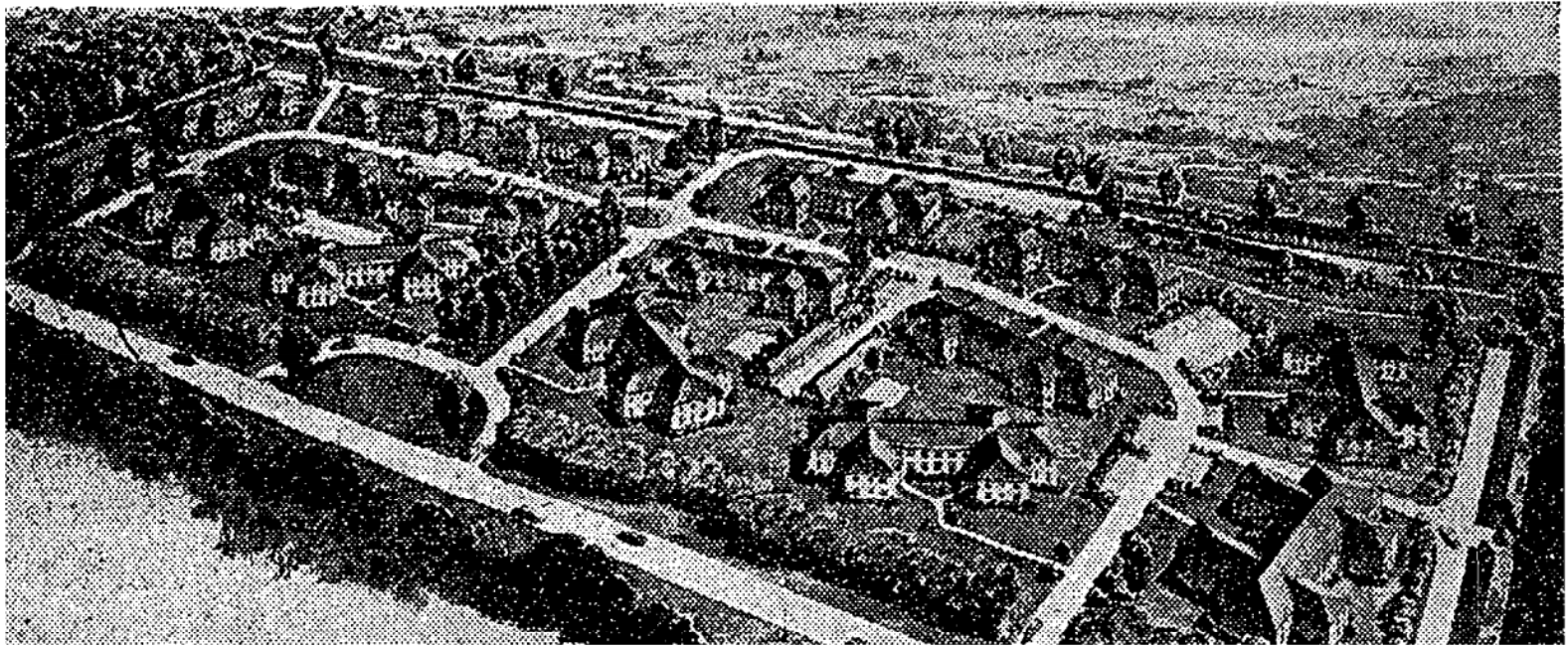


NEW GARDEN-TYPE APARTMENTS FOR THE SUBURBS



Plan of Bryant Gardens, \$4,000,000 apartment community for 420 families under construction by Sam Minskoff & Sons on Bryant Avenue near Mamaroneck Avenue in White Plains, where renting has been started by Brown, Harris, Stevens, Inc., agents. Albert E. Schaefer is the architect.

Agents Start Renting at Bryant Gardens, 420-Family Apartments in White Plains

Henry H. Minskoff, vice president of Sam Minskoff & Sons, builders of the 420-family Bryant Gardens apartment development in White Plains, N. Y., yesterday reported the opening of a renting office at 622 Mamaroneck Avenue, near the Gedney Station Post Office. Brown, Harris, Stevens, Inc., are the agents.

Representing an investment of about \$4,000,000, the new garden apartment community occupies a twenty-two-acre tract in a wooded area, some of which is being retained to provide a rustic setting for the apartments. The first apartments are expected to be ready for tenants in August.

The development will consist of fifteen two-story red-brick buildings in the colonial style from plans by Albert E. Schaefer, architect. It will contain apartments of two, three, three and one-half and four and one-half rooms, to be rented for an average of less than \$30 per room per month.

Monthly rentals will range from \$65 to \$73 for two rooms, \$87 to \$90 for three rooms, \$92 to \$97 for three and one-half rooms and \$108 to \$116 for four and one-half rooms. Apartments will be equipped with refrigerators, gas ranges and formica counter tops in kitchens, colored tile and built-in hampers in bathrooms, recessed radiation and full-length aluminum window screens. Every apartment will have a foyer.

The parking problem is being solved by 186 individual garages and outdoor parking areas. Other modern features include incinerators, laundry rooms, carriage, bicycle and storage rooms and outdoor playgrounds for the children of tenants.

As part of the land development the builders are preserving a row of oak trees which will form a natural center island and are improving part of the site with outdoor sitting areas and winding walks.